

How To Upload Customized Report File (QRP) on Shilpi Server

Please Follow Simple steps to upload Customized report file “QRP” on Shilpi Server for avoiding accidental deletion or overwriting.

Upload QRP

Step 1.

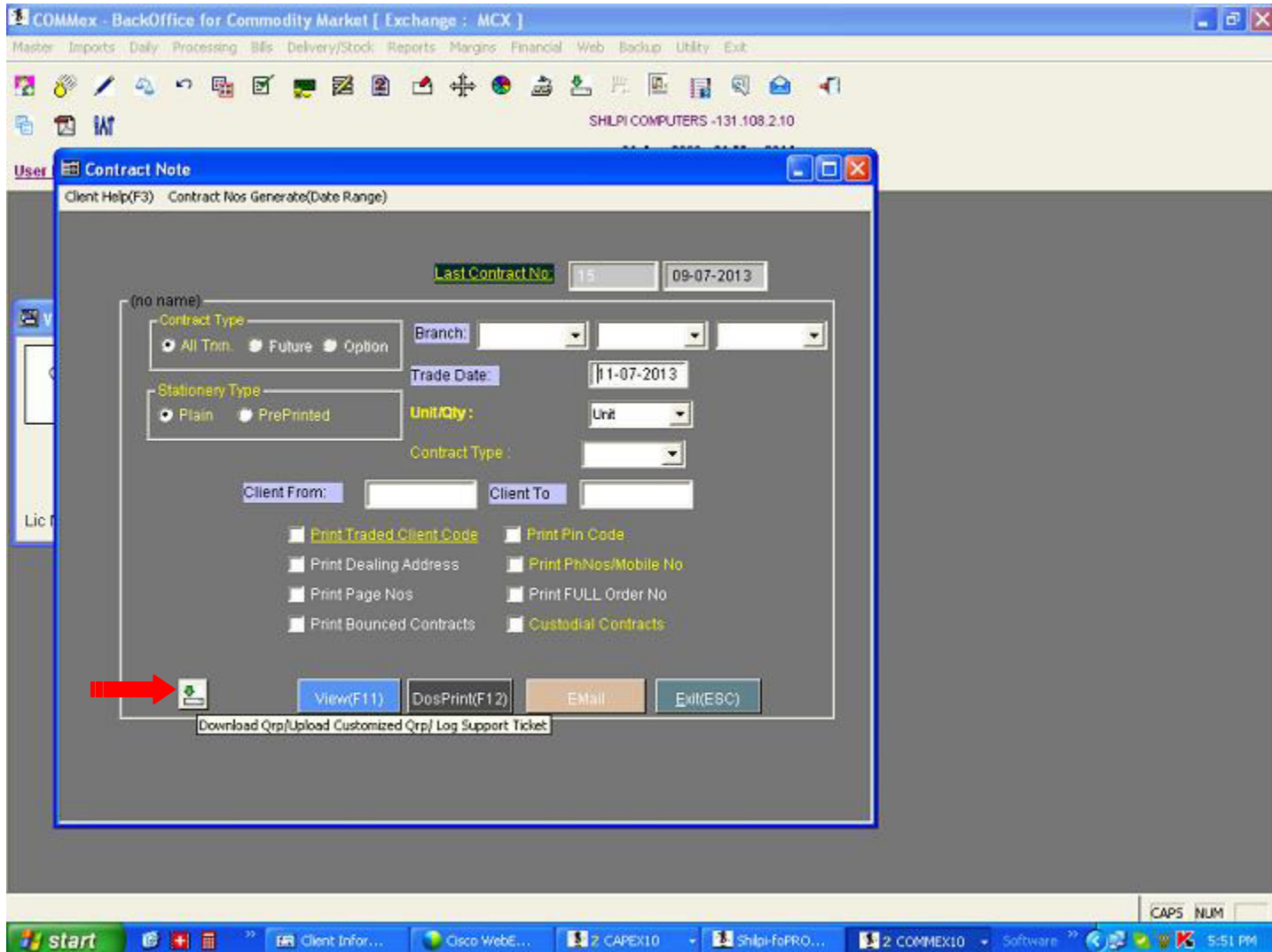
Customized QRP should be available in the folder from where Product exe is running
(capex10, Commex10, Fxfuture, Spot10, Cdsl20, Dpora20 etc.)

Step 2.

Goto the option/report for which QRP has been customized

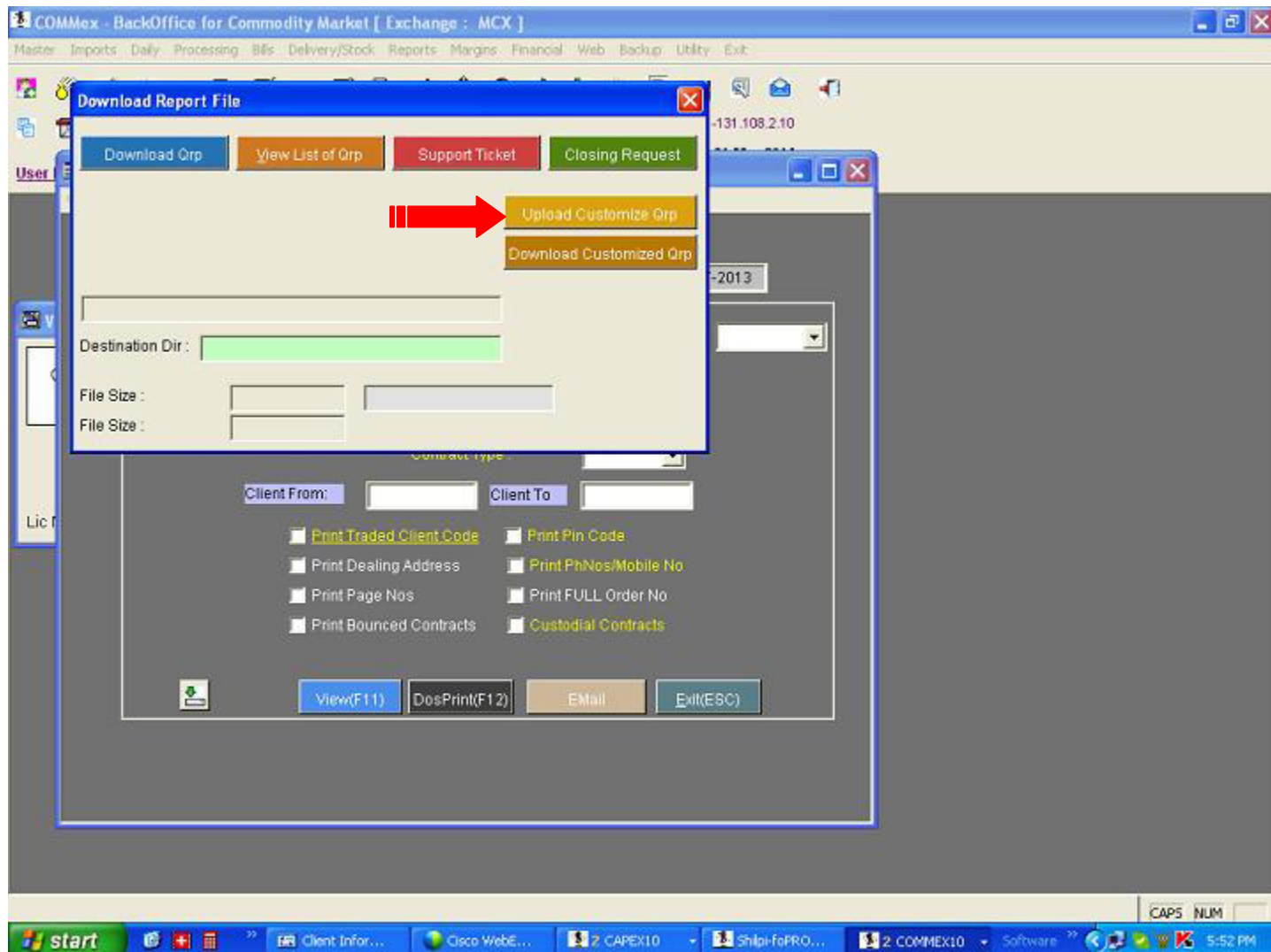
Step 3.

Click on (Download QRP/ Upload Customized QRP/ Log Support Ticket) Icon



Step 4.

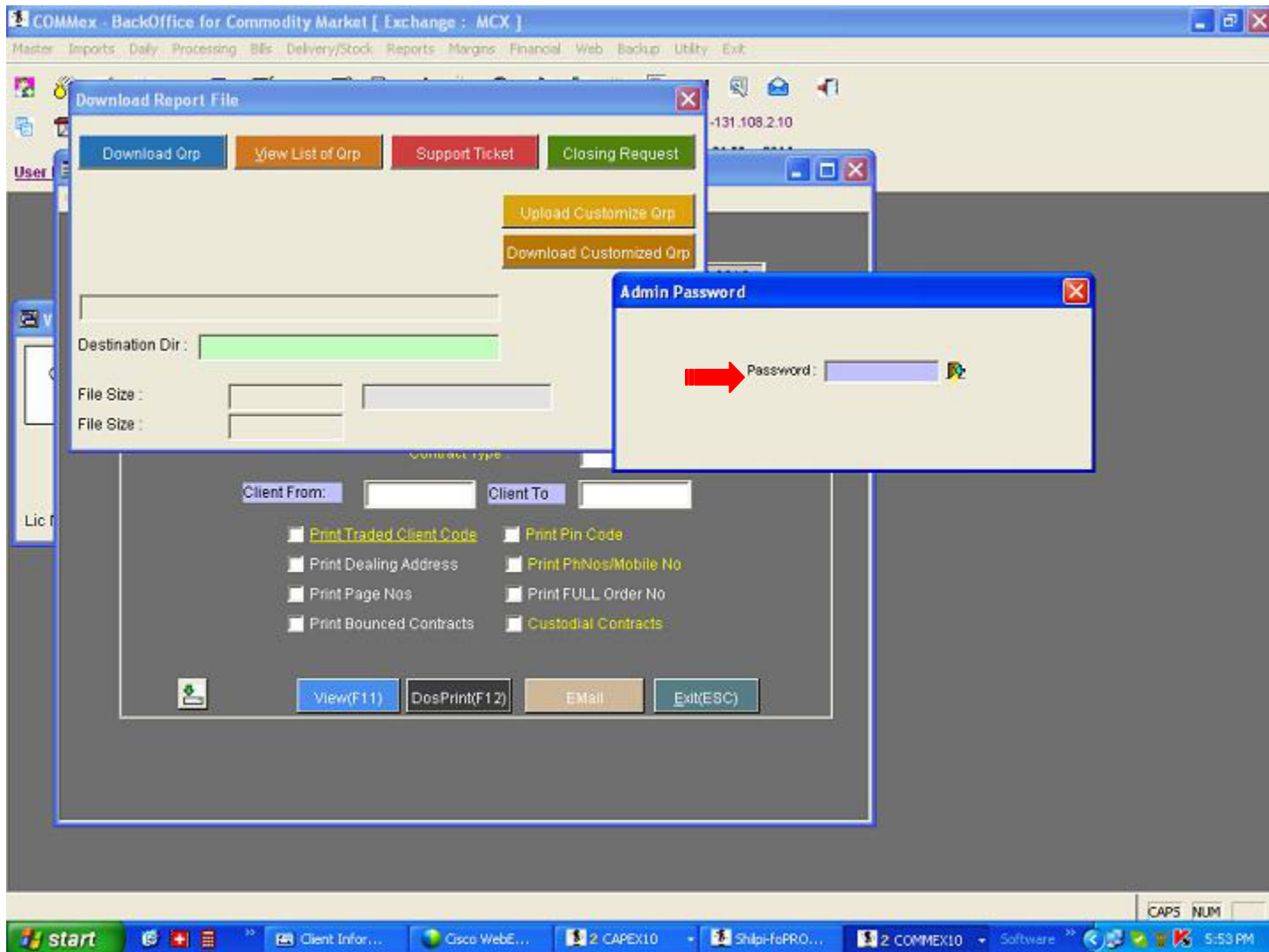
Click on “Upload Customize Qrp” to upload QRP



Step 5.

System will prompt for Admin Password

(Anybody knowing application ADMIN Password/ ADMIN Transaction
Level Password Can Upload the QRP File)

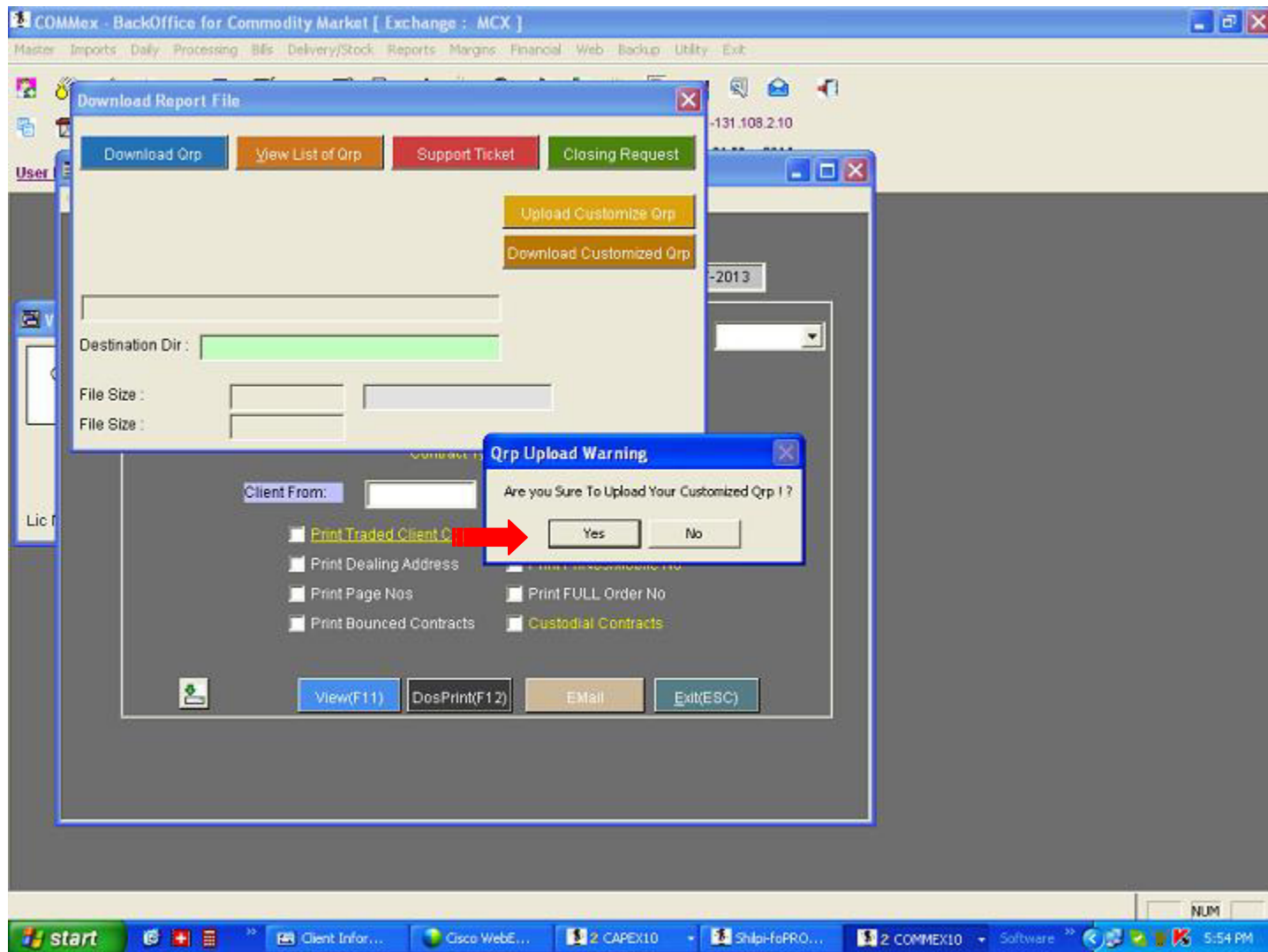


Step 6.

System will prompt for confirmation

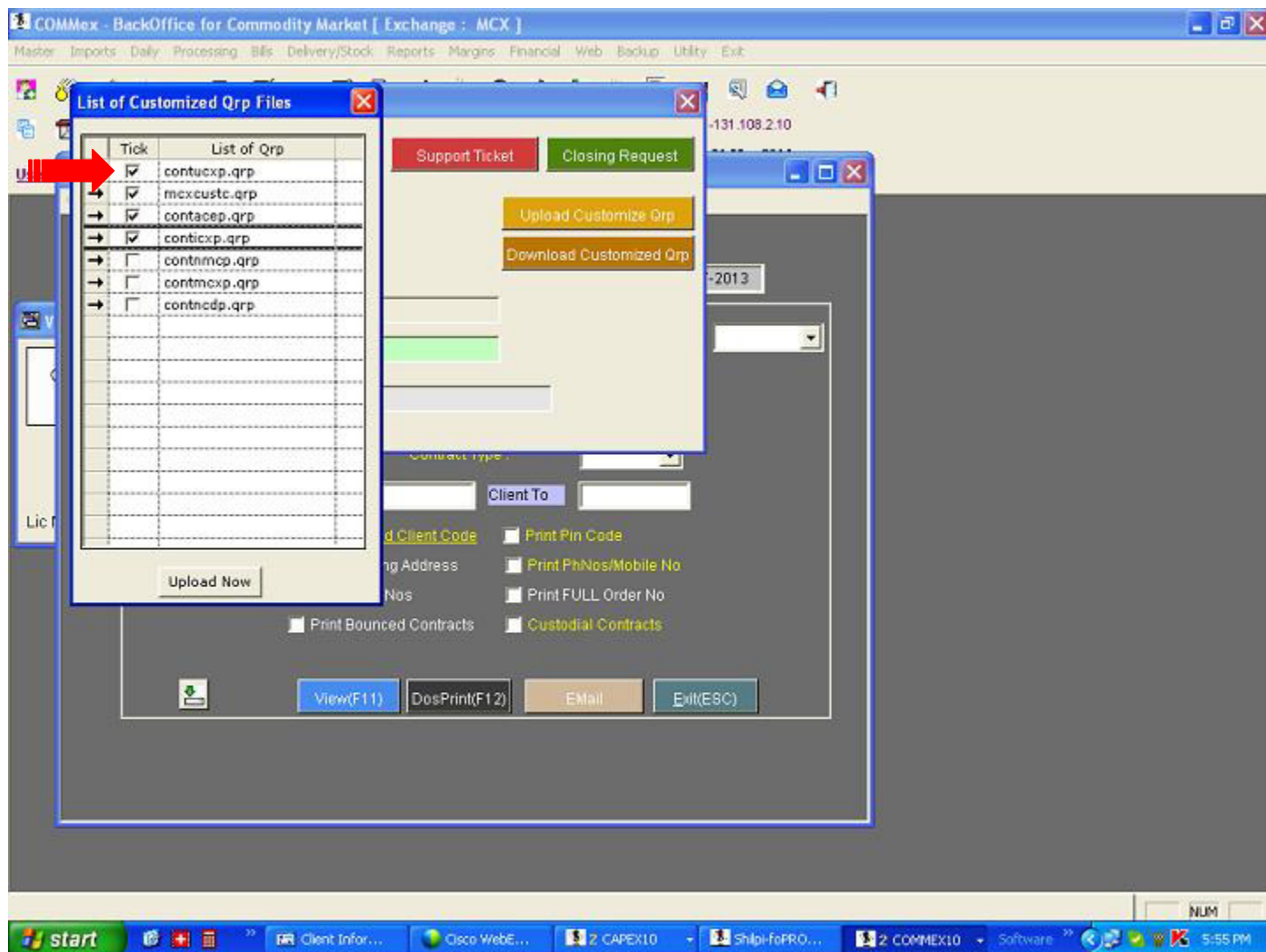
“Are You Sure To Upload Customized Qrp”

Click on “Yes”



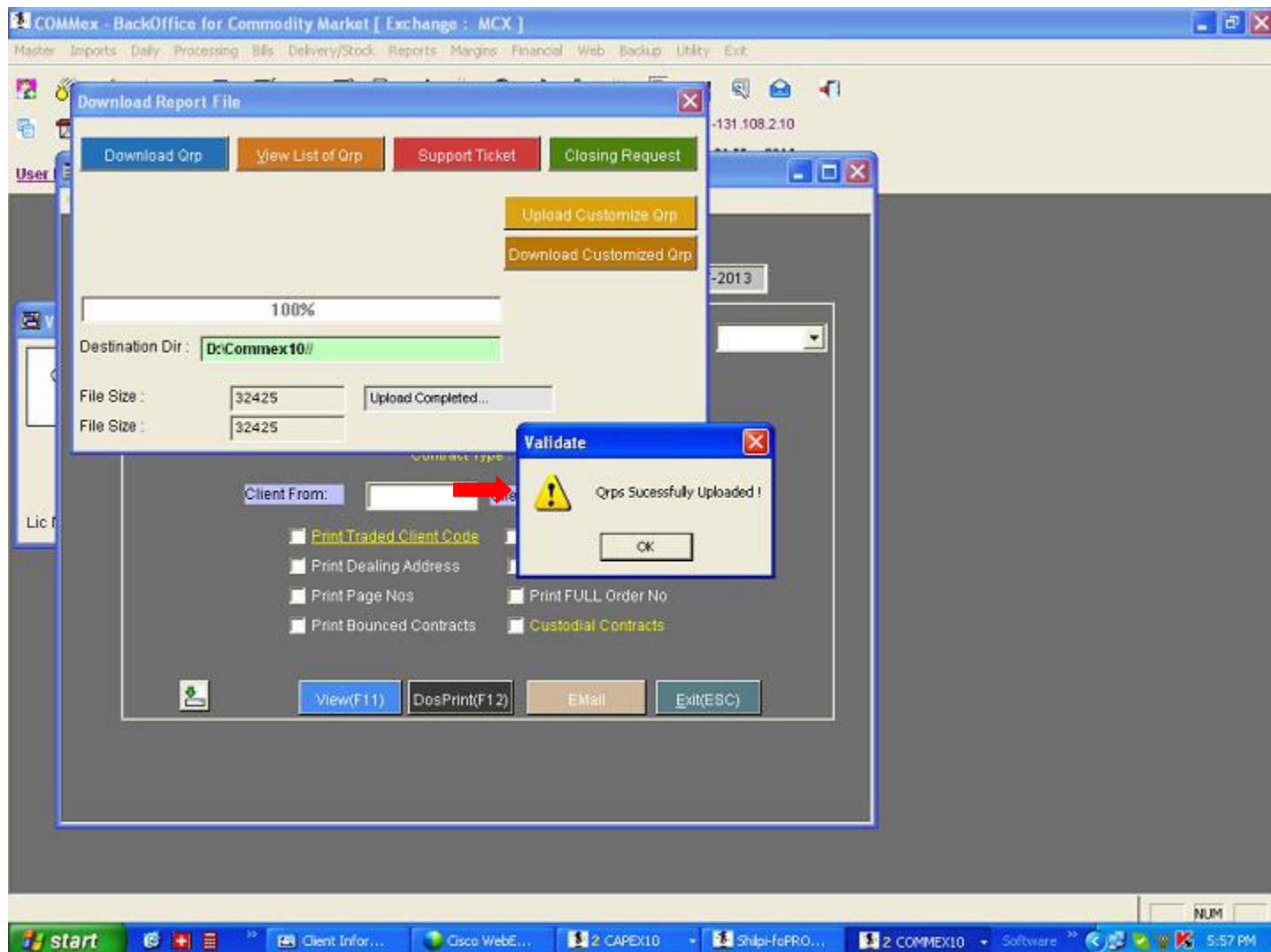
Step 7.

You will get the list of related QRP for that option, now click on the Check Box in front of the QRP Name to select the file to be uploaded



Step 8.

On Successful Upload of File You Will get the Message “Qrps Sucessfully Uploaded!”

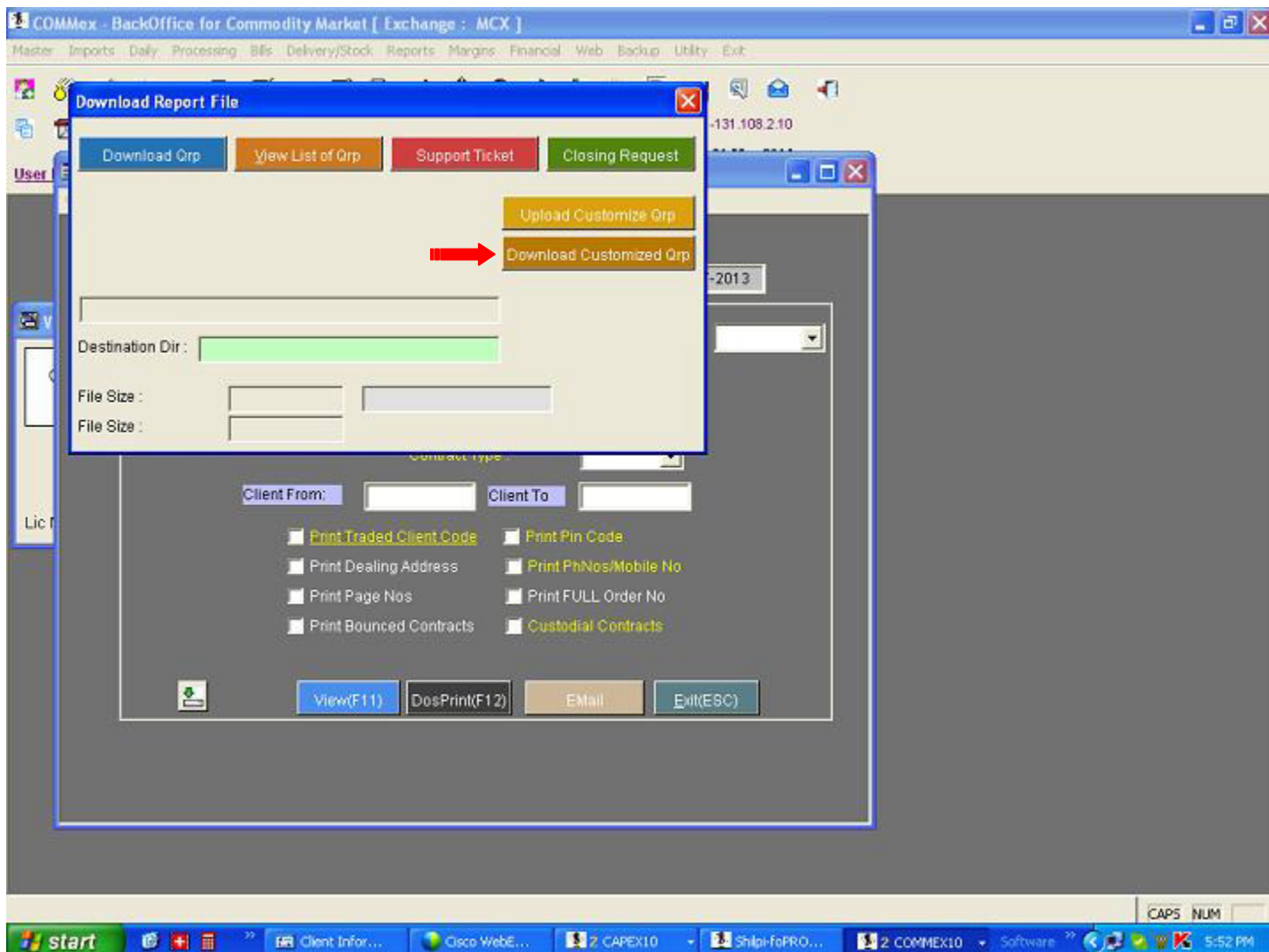


HOW To DownLoad QRP

Now To Download Customized QRP

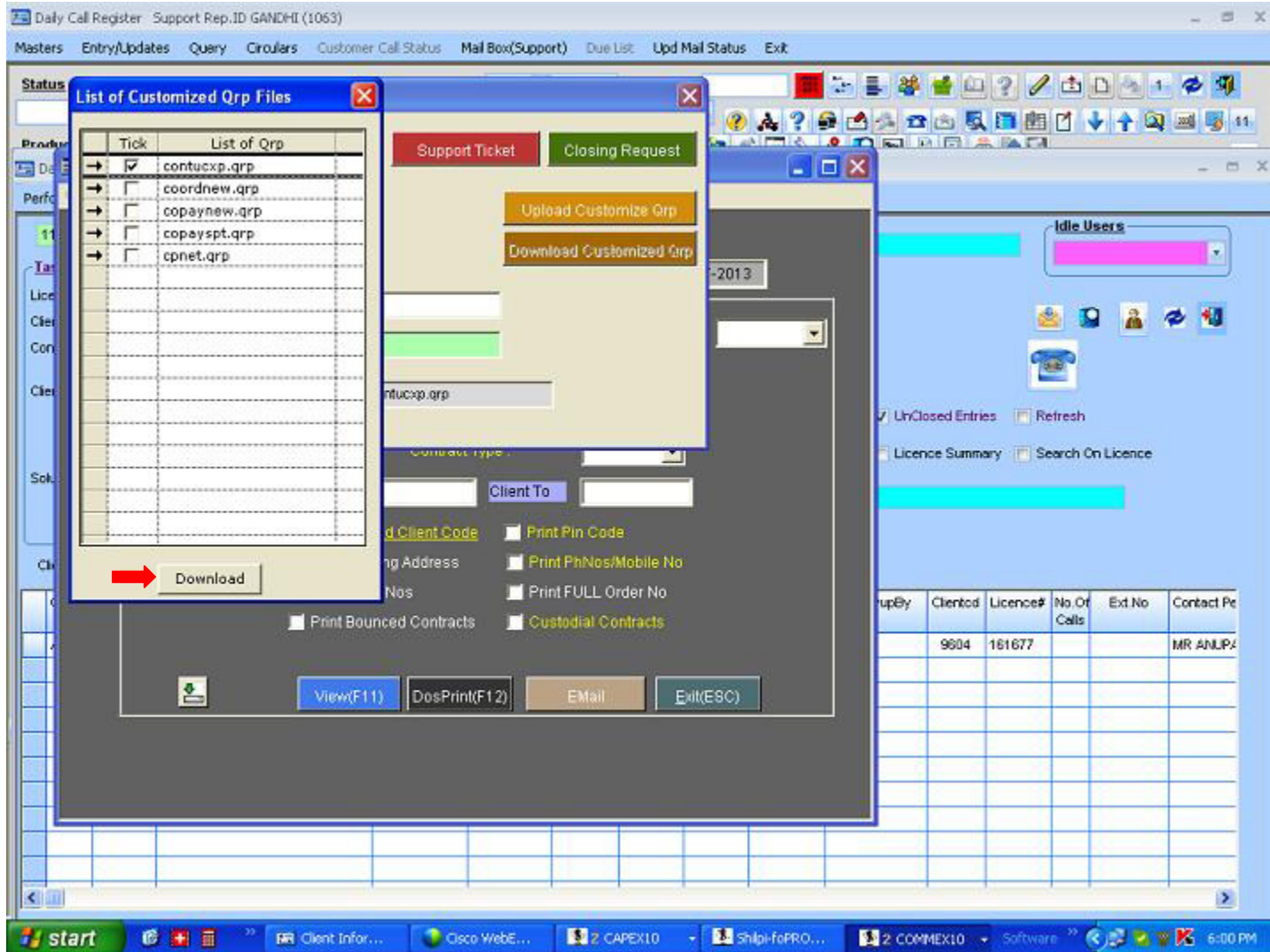
Step 1.

Click on Download Customized Qrp



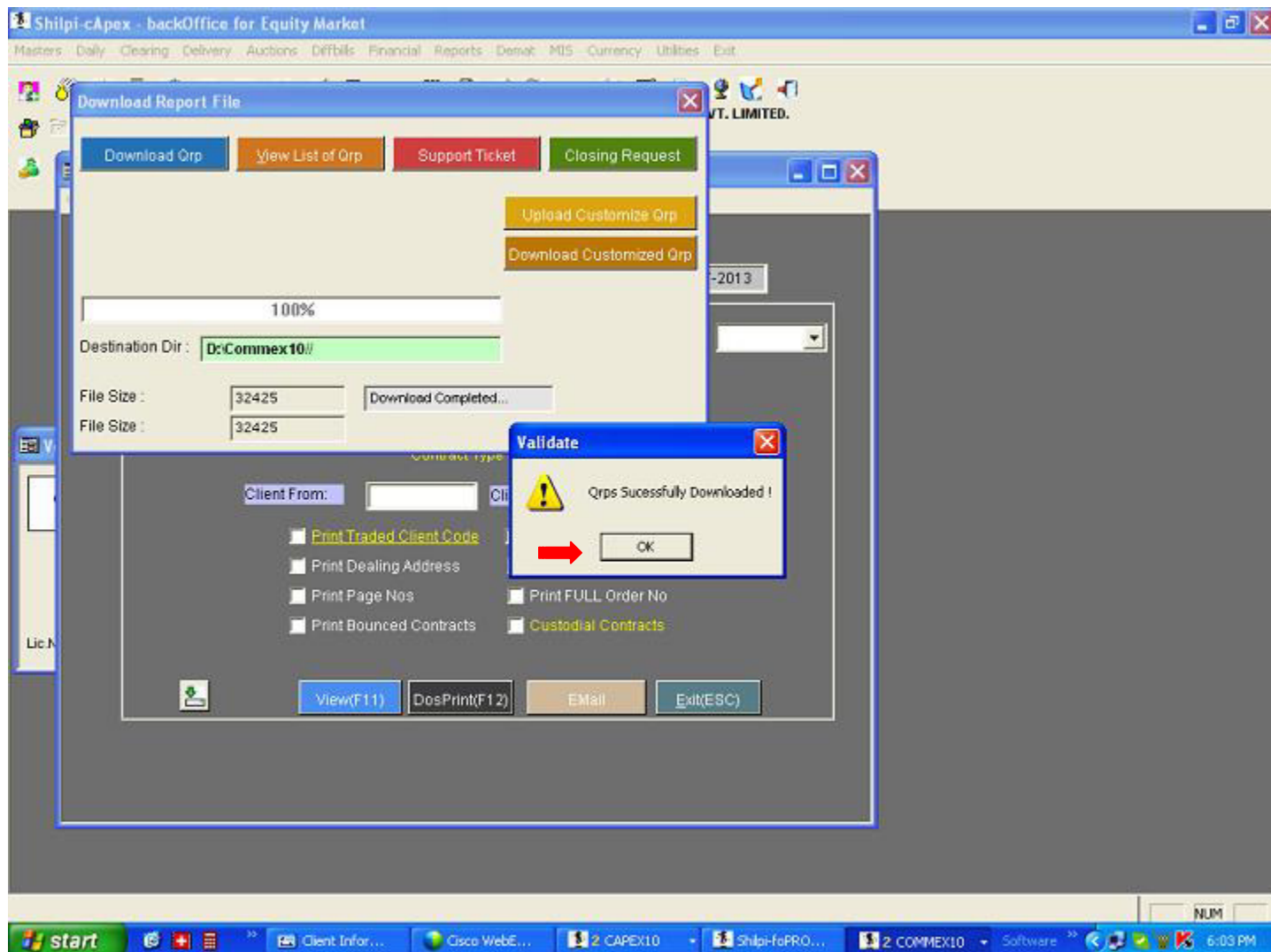
Step 2.

You Will get the list of all the Customized QRP uploaded in your a/c, Click on the QRP file to be downloaded and then press "DownLoad"



Step 3.

On Successful Download you will Get the message
“ Qrps Sucessfully Downloaded !” click on “OK”



Thank You for viewing
Take the full benefit of this option,
For Suggestions please write us at support@shilpisoft.com

Shilpi Team!